

# CATERPILLAR D4.XL



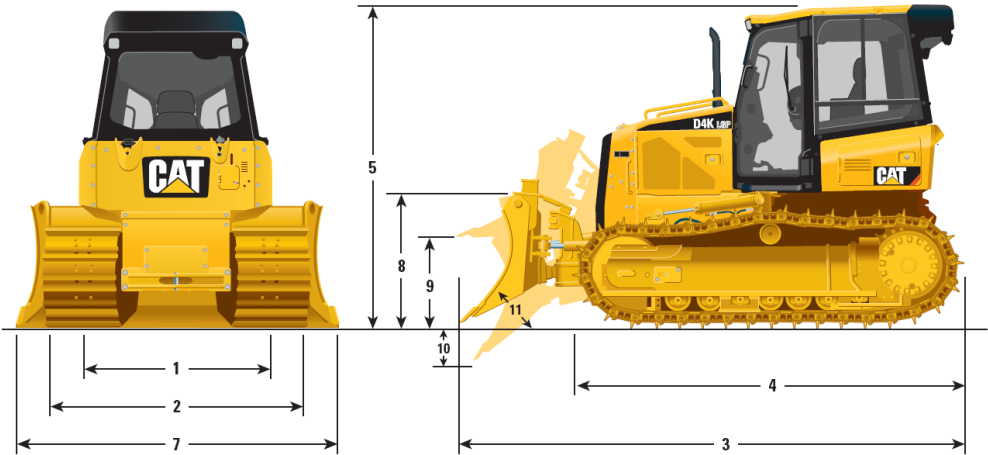
## CATERPILLAR D4.XL

The Cat D4 Dozer deliver superior performance and comfort while reducing your operating costs. The large spacious cab provides a comfortable work area. Intuitive seat mounted controls are easy to use for greater job accuracy and efficiency, with fewer passes and less manpower. From the first cut to finish grade.

### Specifications

Dump vessel type		One-way dump
Operating weight		8147 kg
Engine	Model	CAT C4 Diesel Engine
	Power – Gross	93 HP
	Power – Net	85 HP
Transmission	Drive pumps	2.
	Track motors	2
	Travel speed	9 kph forward 10 kph reverse
Under carriage	Number of rollers	(each side) 7
	Shoe width	460 mm
	Track gauge	1550 mm
	Ground pressure	0.39 bar
Winch	Winch Weight	610 kg
	Winch drive	Hydrostatic
	Control	Hydraulic
	Max line pull	11,340 kg (Full drum)
Hydraulic system	Pump output	73.5 L/min
	Relief valve	206 bar
	Output ratings	at 2150 rpm and 69 bar
Fuel tank		195 L

### Dimensions:



- 1: 1550mm 2: 2010mm 3: 4274mm 4: 3275mm 5: 2763mm 6: 332mm  
7: 2782mm 8: 1010mm 9: 743mm 10: 573mm 11: 52-58 Degree

